

2003 Florida Youth Risk Behavior Survey

◀ Fact Sheet 1 ▶



Unintentional Injuries

December 2004

Introduction

The Florida Youth Risk Behavior Survey (YRBS) is a self-administered, school-based anonymous survey which has been conducted in Florida public high schools every two years since 1991. It is part of a national survey effort led by the Centers for Disease Control and Prevention (CDC) to monitor priority health risk behaviors that contribute markedly to the leading causes of death, disability and social problems among youth in the United States. In 2003, 4,080 students in 75 public high schools in Florida completed the YRBS. The overall response rate was 66 percent. The response rate was high enough for the data to be weighted to represent all Florida public high school students.

Background

Unintentional injury deaths are caused from a variety of circumstances, such as motor vehicle crashes, falls, fires, suffocations and drowning. According to the Florida Vital Statistics Annual Report 2002, unintentional injury was the fifth leading cause of all deaths in Florida, following heart disease, cancer, stroke and chronic lower respiratory disease. It was the leading cause of death among people 1-44 years of age. Among Whites, unintentional injury accounts for 70% of deaths caused by external factors. It accounts for 61% of deaths caused by external factors among non-Whites. The purpose of this study is two-fold: to address the use of safety equipment by, and assess the levels of driving under the influence of alcohol consumption among, Florida high school youth.



Results

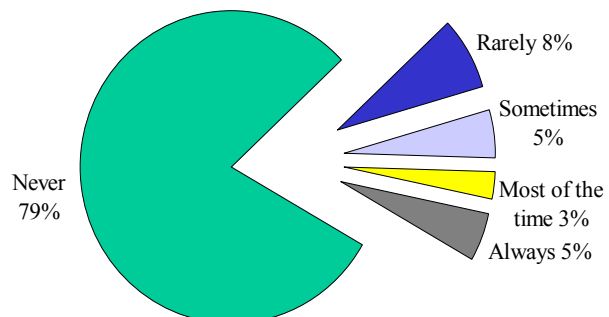
1. When you rode a bicycle during the past 12 months, how often did you wear a helmet?

Overall in 2003, 66 percent of high school students reported riding a bicycle during the past 12 months. Male students (76 percent) had a higher prevalence of riding a bicycle than female students (56 percent).

Among those who had ridden a bicycle in the previous 12 months:

- 79 percent never wore a helmet
- 8 percent rarely wore a helmet
- 5 percent wore a helmet sometimes
- 3 percent wore a helmet most of the time
- 5 percent always wore a helmet.

Figure 1: Helmet use among Florida public high school students who rode a bicycle during the past 12 months, 2003



Unintentional Injuries

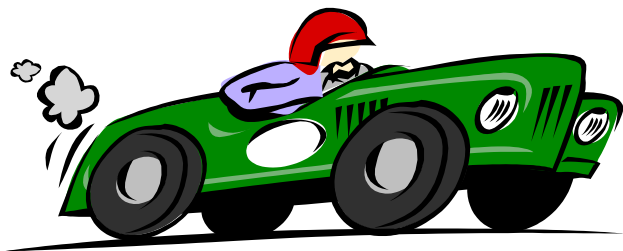
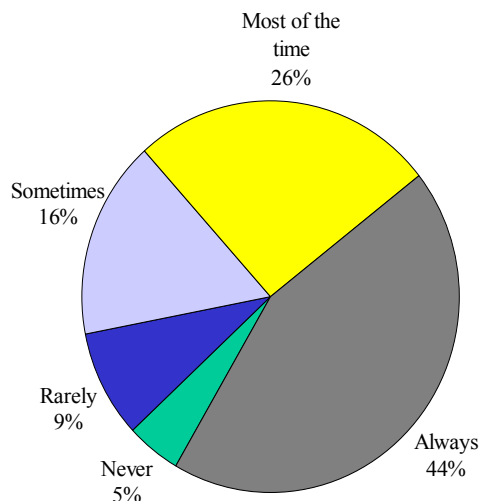
2. How often do you wear a seat belt when riding in a car driven by someone else?

- 44 percent of students reported always wearing a seat belt
- 26 percent of students wear a seat belt most of the time
- 16 percent of students wear a seat belt sometimes
- 14 percent of students rarely or never wear a seat belt.

The objective of Healthy People 2010 is to increase the use of safety belts to 92 percent.

Please see Figure 2.

Figure 2: Seat belt use among Florida public high school students who rode in a car driven by someone else, 2003



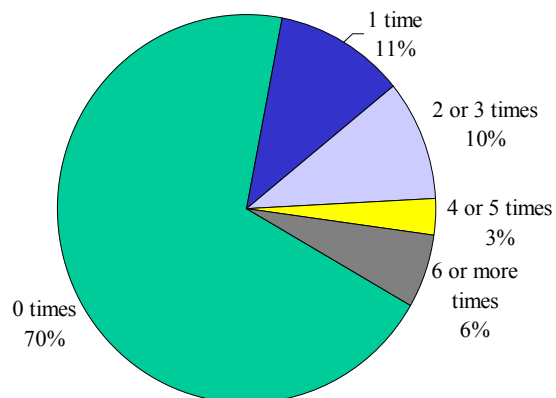
3. During the past 30 days, how many times did you ride in a car or other vehicle driven by someone who had been drinking alcohol?

- 70 percent of students reported 0 times
- 11 percent of students reported one time
- 10 percent of students reported 2 or 3 times
- 9 percent of students reported 4 or more times

The goal of Healthy People 2010 is to reduce to 30 percent the proportion of high school students who report that they rode during the previous 30 days with a driver who had been drinking alcohol.

Please see Figure 3.

Figure 3: Number of times Florida public high school students rode in a car or other vehicle driven by someone else who had been drinking alcohol during the past 30 days, 2003



Unintentional Injuries

4. During the past 30 days, how many times did you drive a car or other vehicle when you had been drinking alcohol?

89 percent of students reported 0 times
 4 percent of students reported 1 time
 4 percent of students reported 2 or 3 times
 3 percent of students reported 4 or more times

Please see Figure 4.

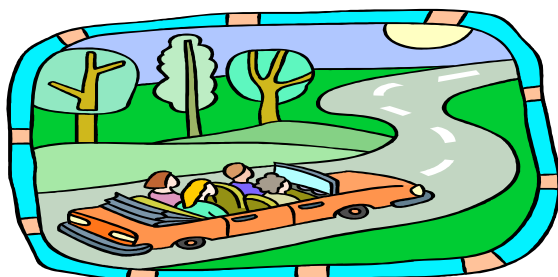
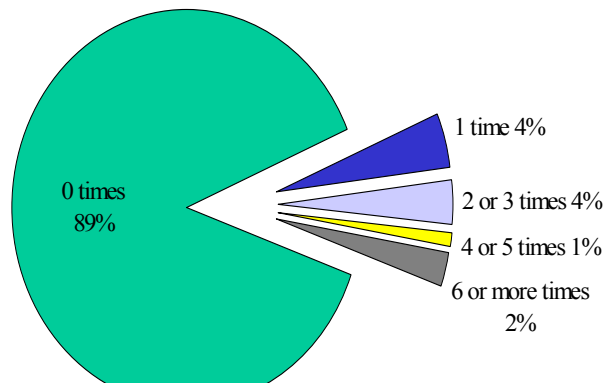


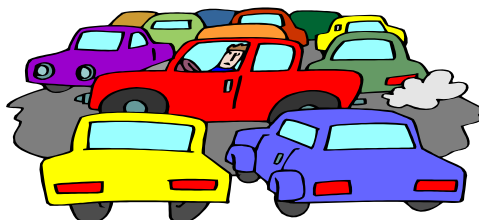
Figure 4: Number of times during the past 30 days Florida public high school students drove a car or other vehicle when they had been drinking alcohol, 2003



Summary

Among Florida high school youth:

1. 87 percent of students never or rarely wore a helmet when they rode a bicycle during the past 12 months.
2. One in seven (14 percent) never or rarely wore a seat belt when they rode in a car driven by someone else, and male students (16.5 percent) had a higher prevalence than female students (10.8 percent) of engaging in this behavior.
3. One in three (30 percent) students rode at least one time during the past 30 days in a car or other vehicle driven by someone who had been drinking alcohol.
4. Finally, one in nine (11 percent) drove a car or other vehicle at least one time when they had been drinking during the past 30 days. Male students and non-Hispanic White students had higher prevalences of reporting this behavior than their counterparts, and the prevalence of this behavior increased with increasing grade level.



Unintentional Injuries

Detailed Table

Statewide Prevalence and 95% Confidence Interval

Survey Question		Percent of students who never or rarely wore a helmet among those who rode a bicycle during the past 12 months	Percent of students who never or rarely wore a seat belt when riding in a car driven by someone else	Percent of students who rode at least one time during the past 30 days in a car or other vehicle driven by someone who had been drinking alcohol	Percent of students who drove a car or other vehicle at least one time during the past 30 days when they had been drinking alcohol
Total		87.3 (85.6~89.1)	13.7 (12.1~15.4)	30.4 (28.9~31.9)	11.3 (10.3~12.3)
Gender	Male	88.6 (86.3~91.0)	16.5 (14.4~18.7)	29.6 (27.1~32.2)	13.8 (12.2~15.3)
	Female	85.8 (83.6~88.1)	10.8 (8.9~12.6)	31.2 (29.4~33.0)	8.7 (7.3~10.2)
Race/ Ethnicity	Non-Hispanic White	87.2 (84.9~89.6)	12.1 (10.1~14.1)	32.0 (29.7~34.4)	14.8 (13.3~16.4)
	Non-Hispanic Black	88.6 (85.3~91.8)	16.1 (13.4~18.9)	28.4 (25.0~31.7)	5.9 (4.2~7.7)
	Hispanic	86.8 (85.0~88.7)	14.7 (12.0~17.4)	28.7 (25.6~31.9)	8.3 (6.4~10.1)
Grade	9th	84.8 (81.9~87.7)	14.9 (12.6~17.2)	28.5 (26.3~30.7)	6.3 (4.9~7.8)
	10th	88.9 (86.0~91.9)	12.6 (9.6~15.6)	30.2 (27.5~32.9)	9.4 (7.4~11.4)
	11th	89.5 (86.5~92.5)	12.9 (10.5~15.4)	31.6 (28.4~34.7)	13.9 (11.5~16.3)
	12th	88.6 (85.2~91.9)	13.6 (10.3~16.9)	33.2 (29.9~36.5)	19.8 (16.3~23.3)

Contact information

For more information about the Florida YRBS, please contact: Melissa Murray, Florida Youth Survey Coordinator, at (850) 245-4444, extension 2445 or by e-mail at Melissa_Murray@doh.state.fl.us, or contact Zhaohui Fan, Epidemiologist, at extension 2418 or by e-mail at Zhaohui_Fan@doh.state.fl.us.

