

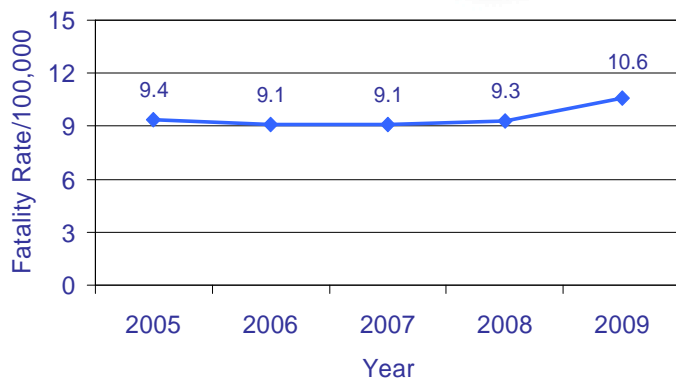


FLORIDA INJURY FACTS: UNINTENTIONAL FALLS

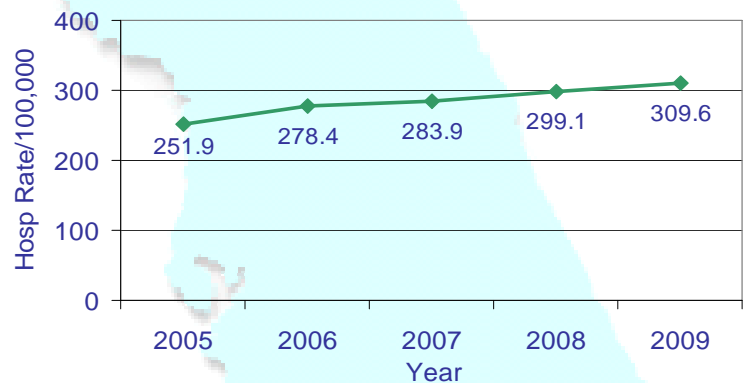
AT A GLANCE:

- Unintentional falls are the leading cause of injury death among Florida residents ages 65 years and older and the fourth leading cause of injury death overall. In addition, falls are the leading cause of non-fatal injury-related hospital admissions in Florida.
- In 2009, 1,988 residents were fatally injured in a fall; there were an additional 58,264 hospitalizations for non-fatal injuries. Nearly three-quarters of these injuries were among residents ages 65 years and older.

Fatal Unintentional Fall-Related Injuries, by Year, 2005-2009



Non-Fatal Unintentional Fall-Related Injury Hospitalizations, by Year, 2005-2009



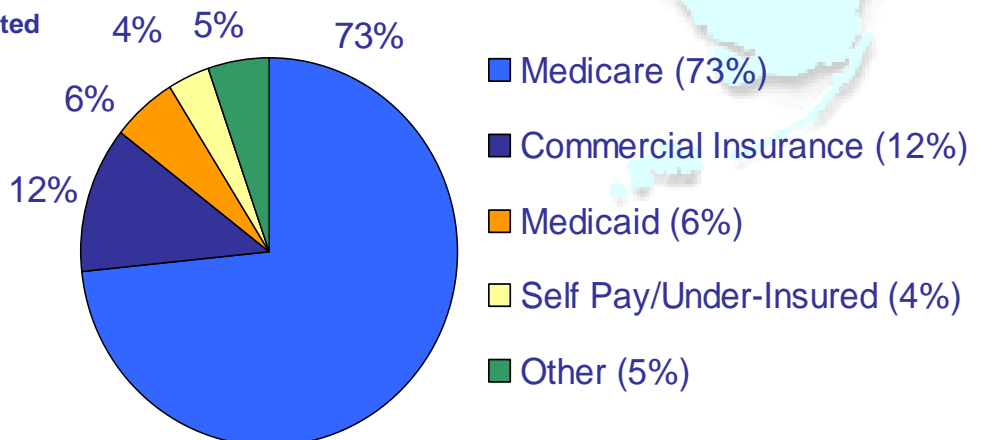
ECONOMIC IMPACT:

In 2009:

- The median admission charge for non-fatal unintentional fall-related injury hospitalizations was \$37,674; total charges exceeded \$2.7 billion. The median length of stay was four days.
- Medicare was the payer source for 73% of these hospitalizations.

Non-Fatal Unintentional Fall-Related Injury Hospitalization Admission Charges and Payer Source, Florida Residents, 2009

Median Admission Charge	
\$37,674	
Total Admission Charges	
> \$2.7 billion	

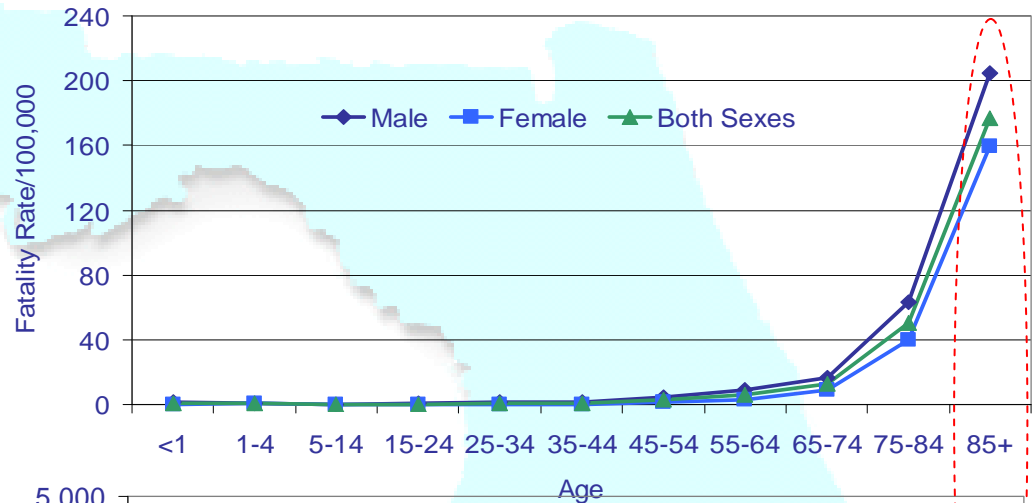


WHO IS INJURED?

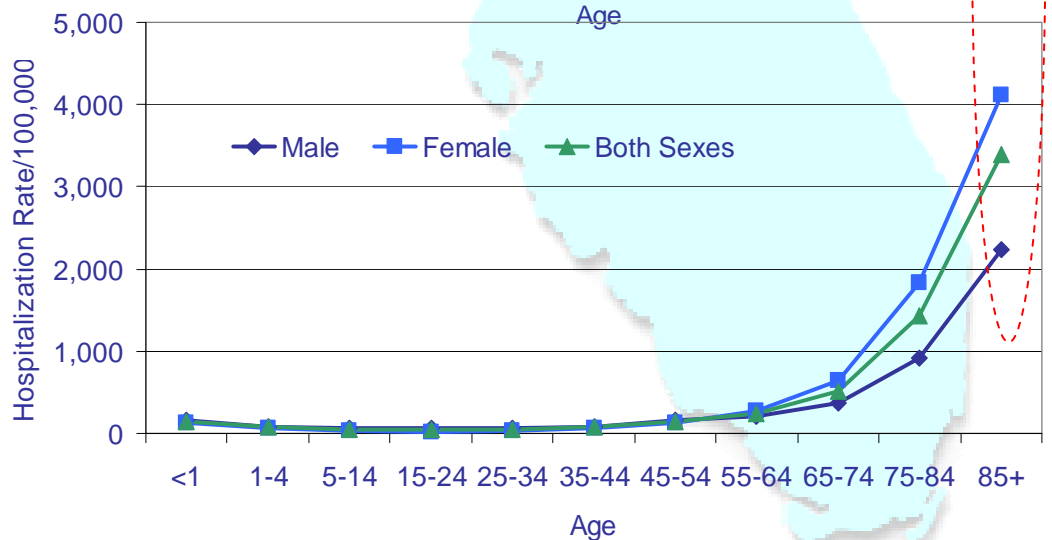
In 2009:

- Males of every age group had a higher rate of fatal unintentional fall-related injuries than their female counterparts.
- After age 54, females had higher rates of non-fatal hospitalizations than their male counterparts.
- Residents over 84 years of age had the highest rates of both fatal unintentional fall-related injuries and non-fatal hospitalizations.

Fatal Unintentional Fall-Related Injuries, by Age and Sex, Florida Residents, 2009



Non-Fatal Unintentional Fall-Related Injury Hospitalizations, by Age and Sex, Florida Residents, 2009



- Males accounted for 53% of unintentional fall-related injury deaths, but only 35% of non-fatal hospitalizations. Females accounted for 47% of deaths, and 65% of hospitalizations.
- Whites accounted for 90% of unintentional fall-related injury deaths and non-fatal hospitalizations combined, Blacks accounted for 5%, and Other Non-Whites 4%.

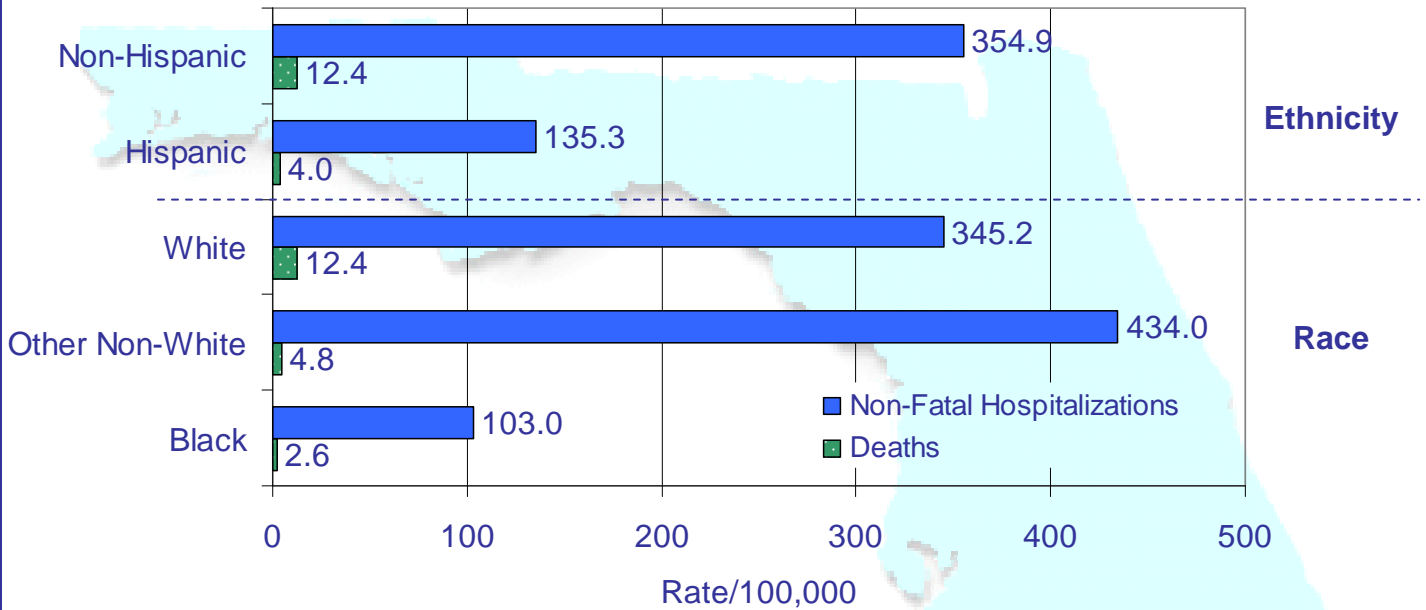
Fatal Unintentional Fall-Related Injuries and Non-Fatal Hospitalizations, by Sex and Race, Florida Residents, 2009

	Female	Male	White	Black	Other Non-White	Both Sexes, All Races
Deaths	930	1,058	1,881	81	26	1,988
Non-Fatal Hospitalizations	38,158	20,106	52,397	3,195	2,338	58,264

In 2009:

- Non-Hispanic residents had higher rates of fatal unintentional fall-related injuries and non-fatal hospitalizations than Hispanic residents.
- White residents had the highest rate of fatal unintentional fall-related injuries while Other Non-White residents had the highest non-fatal hospitalization rate. Black residents had the lowest of both fall-related injury rates.

Fatal Unintentional Fall-Related Injuries and Non-Fatal Hospitalizations, by Hispanic Ethnicity and Race, Florida Residents, 2009

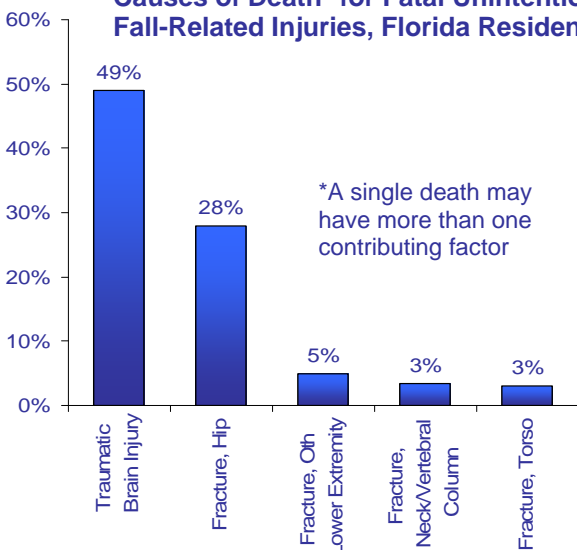


MOST COMMON INJURIES FROM UNINTENTIONAL FALLS:

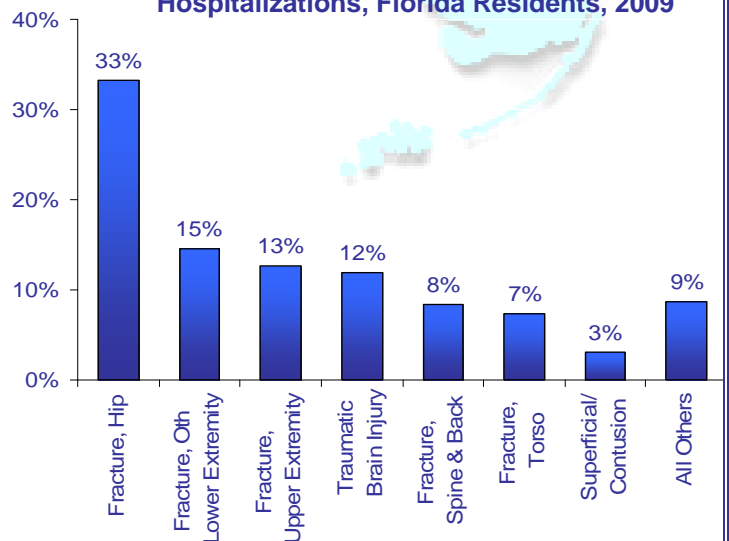
In 2009:

- Hip fractures were related to 28% of unintentional fall-related deaths and responsible for 33% of non-fatal unintentional fall-related injury hospitalizations.
- Traumatic brain injuries were related to 49% of unintentional fall-related deaths and responsible for 12% of non-fatal unintentional fall-related injury hospitalizations.

Select Immediate and Contributing Causes of Death* for Fatal Unintentional Fall-Related Injuries, Florida Residents, 2009



Primary Diagnoses for Non-Fatal Unintentional Fall-Related Injury Hospitalizations, Florida Residents, 2009



PLACE OF OCCURRENCE AND TYPE OF FALL:

In 2009:

- About 76% of unintentional fall-related injuries occurred within or around a place of residence like a house or residential institution.
- The most common falls were same-level falls which includes: slips, trips, and stumbles. Falls from ladders, beds, and stairs/steps were also common.

Fatal Unintentional Fall-Related Injuries, by Type of Fall, Florida Residents, 2009

External Cause of Injury Code, Description, Number of Deaths

W01 Slip, Trip, Stumble – 30	W11 Ladder – 31
W02 Ice skates, skis, roller-skates, skateboards – <5	W12 Scaffolding – <5
W03 Collision with, or push by, other person – <5	W13 Building – 30
W04 While carried/supported by other person – 8	W14 Tree – <5
W05 Wheelchair – 22	W15 Cliff – <5
W06 Bed – 57	W16 Jump or dive into water – 5
W07 Chair – 13	W17 Other fall, one level to another – 19
W08 Other furniture – 8	W18 Other fall, same level – 914
W09 Playground equipment - <5	W19 Unspecified – 801
W10 Stairs, Steps – 37	

Non-Fatal Unintentional Fall-Related Injury Hospitalizations, by Type of Fall, Florida Residents, 2009

External Cause of Injury Code, Description, Number of Hospitalizations

E880 Escalator – 14	E884.5 Other furniture – 201
E880.1 Sidewalk curb – 245	E884.6 Commode – 275
E880.9 Stairs, Steps – 1,688	E884.9 Other fall – one level to another - 1,840
E881.0 Ladder – 1,587	E885.0 Non-motorized Scooter - 70
E881.1 Scaffolding – 71	E885.1 Roller-Skates – 130
E882 Building – 493	E885.2 Skateboard – 238
E883.0 Dive or jump into water – 68	E885.3 Skis – 36
E883.1 Well - <5	E885.4 Snowboard – <5
E883.2 Storm drain or manhole – <5	E885.9 Other Slip, Trip, Stumble – 24,277
E883.9 Other hole/opening – 56	E886.0 Collision with person in sports – 155
E884.0 Playground equipment – 324	E886.9 Oth/Unspec collisions with person – 122
E884.1 Cliff – <5	E888.0 Fall and strike sharp object – 195
E884.2 Chair – 963	E888.1 Fall and strike against other object – 954
E884.3 Wheelchair – 765	E888.8 Other fall – 3,749
E884.4 Bed – 1,920	E888.9 Unspecified fall – 17,820

INFORMATION AND PREVENTION RESOURCES:

- The Centers For Disease Control and Prevention, National Center for Injury Prevention and Control <http://www.cdc.gov/homeandrecreationalafety/falls/index.html>
- Florida Department of Elder Affairs, Communities for a Lifetime <http://www.communitiesforalifetime.org>

DATA SOURCES AND CASE DEFINITIONS:

Unintentional Fall-Related Injury Deaths: Florida Department of Health, Office of Vital Statistics, Death Certificates; Underlying Cause of Death ICD-10 W00-W19 Non-Fatal Unintentional Fall-Related Injury Hospitalizations: Agency for Health Care Administration, Hospital Discharge Data; Records with Injury Principal Diagnosis and Unintentional Fall External Cause of Injury Code ICD-9 CM E880-E886, E888

COUNTY BY COUNTY COMPARISON: RURAL* COUNTIES

Unintentional Fall-Related Injury Deaths and Non-Fatal Hospitalizations,
Florida Residents of Rural Counties, 2009

